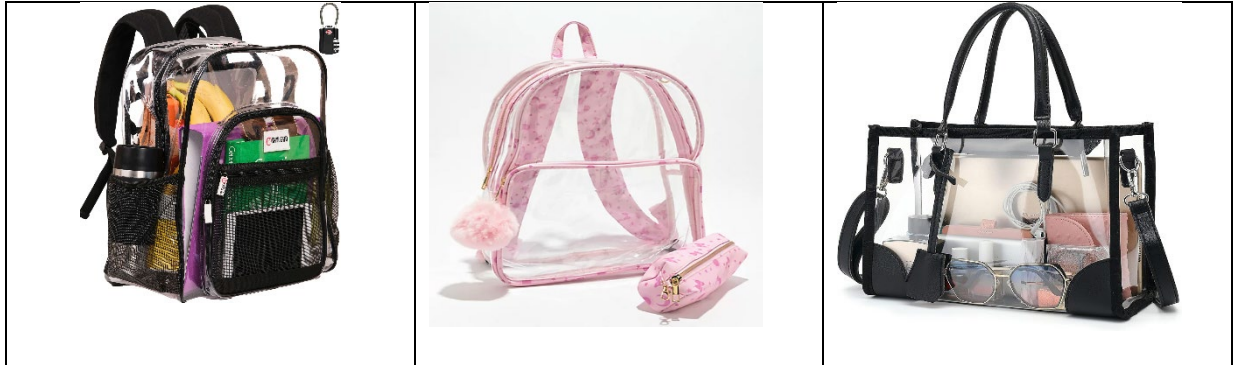


## Western Wayne HS Approved Backpack Options

We understand that prohibiting the use of traditional backpacks during the school day may be inconvenient. To help students transport their items to and from class, we do permit the use of clear bags throughout the school day. Below are examples of WWHS approved options, as well as answers to frequently asked questions.



### Frequently Asked Questions

Can I bring my traditional (not clear) backpack to school?

Yes. Students may bring their traditional backpacks to school. Traditional backpacks must be placed in the locker upon arrival to school and remain until dismissal time. If the bookbag is too large to fit in a student's locker, the student may ask the office for permission to place the backpack in the office, to remain there until dismissal.

What are the size specifications for the clear backpack? There are no size specifications for the clear backpack.

Are mesh backpacks allowed (see example)?

No. Mesh backpacks are not allowed. Students are permitted to only use clear backpacks.



Can the front pocket of the backpack have a mesh organizer?

Yes. A mesh organizer inside the front pocket is allowed (see example)



Will backpacks with padded backs be accepted?

No. Backpacks must have clear visibility through all dimensions excluding the backpack bottom (see example).



Are transparent colored backpacks allowed?

No. Colored, transparent backpacks are not allowed (see example). Only fully clear backpacks are permitted.



Can the backpack have colored straps OR company logos on the front?

Yes. The backpack may have colored straps (see example on left). Small company and school logos are also allowed (examples on right), in addition to small monograms but large logos, monograms or other design obstructions are not.

